

---

ORGANIZATIONAL CHART OF

# BEVILL STATE COMMUNITY COLLEGE

---



ALABAMA COMMUNITY  
COLLEGE SYSTEM

BOARD OF TRUSTEES

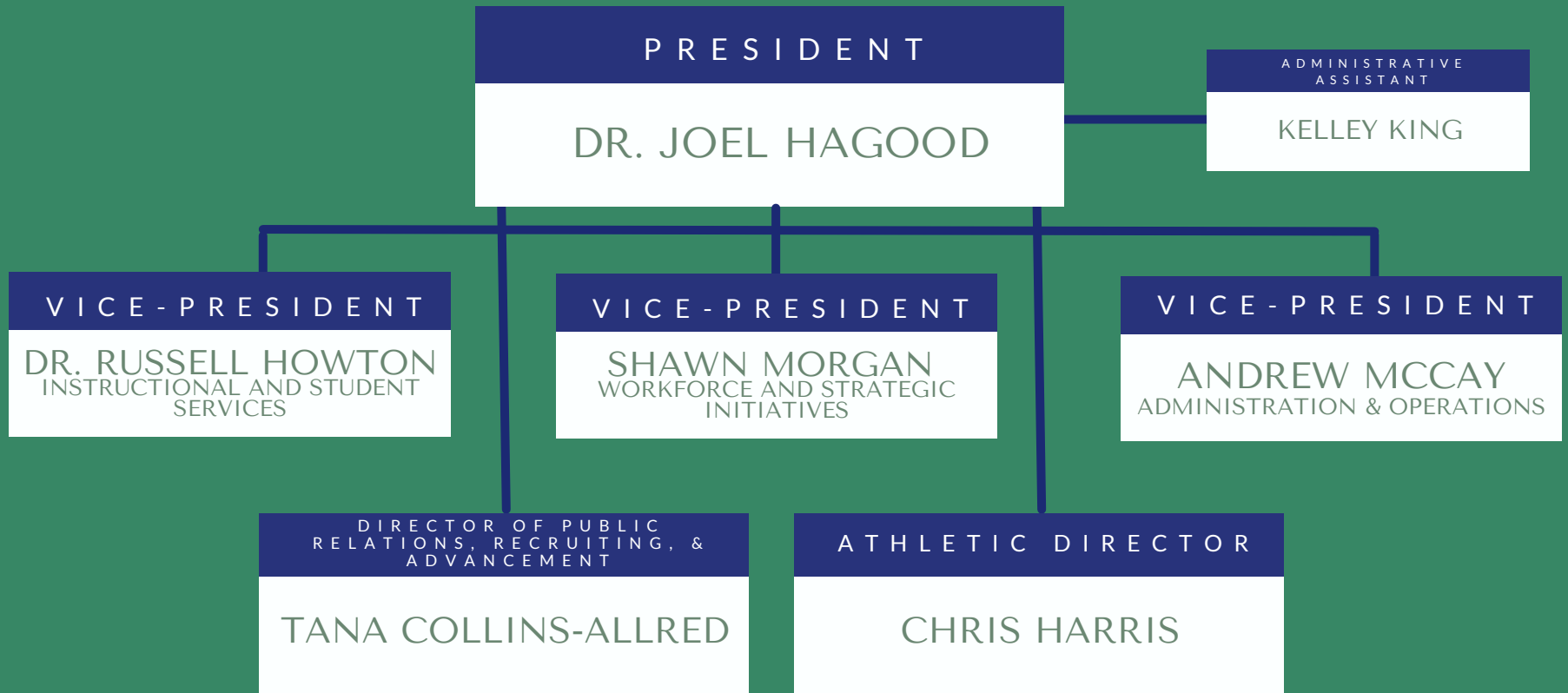
ALABAMA COMMUNITY  
COLLEGE SYSTEM

JIMMY BAKER  
CHANCELLOR

BEVILL STATE  
COMMUNITY COLLEGE

DR. JOEL HAGOOD  
PRESIDENT

# BEVILL STATE COMMUNITY COLLEGE



# BEVILL STATE COMMUNITY COLLEGE



VICE - P R E S I D E N T

ANDREW MCCAY  
ADMINISTRATION & OPERATIONS

ADMINISTRATIVE  
ASSISTANT

JERRI FORD

DIRECTOR OF  
HUMAN RESOURCES

KELSEA WEBB

DIRECTOR OF  
ACCOUNTING & FINANCE

AMBERLEY CLARK

DIRECTOR OF INFORMATION  
TECHNOLOGIES

LISA STEPHENS

DIRECTOR OF  
FACILITIES & SECURITY

RANDY STULTS

ORGANIZATIONAL CHART OF

# BEVILL STATE COMMUNITY COLLEGE



DIRECTOR OF FACILITIES & SECURITY  
RANDY STULTS

CHIEF OF POLICE  
VACANT

ASSISTANT DIRECTOR OF FACILITIES AND MAINTENANCE  
JERRY ABBOTT

POLICE OFFICERS  
PHYSICAL SECURITY GUARDS

DISPATCHERS  
SWITCHBOARD OPERATORS

MAINTENANCE SUPERVISORS  
FAYETTE/HAMILTON/  
JASPER/SUMITON

MAINTENANCE WORKERS/HOUSEKEEPERS  
FAYETTE/HAMILTON/  
JASPER/SUMITON

# BEVILL STATE COMMUNITY COLLEGE



DIRECTOR OF INFORMATION TECHNOLOGIES

LISA STEPHENS

ADMINISTRATIVE SPECIALIST

AUTUMN ADAMS

INFORMATION TECHNOLOGIES TECHNICIANS

MICHAEL AVERY  
MATT SMOTHERS  
JEREMIAH MOLLOY  
ROSS WOODS

SYSTEMS ADMINISTRATOR

ZACH BONTA

SECURITY & IDENTITY ADMINISTRATOR

BEN SULLINS

TELECOMMUNICATIONS & MEDIA TECHNICIAN

DARYL MCGOWAN

ORGANIZATIONAL CHART OF

# BEVILL STATE COMMUNITY COLLEGE



DIRECTOR OF  
HUMAN RESOURCES

KELSEA WEBB

HUMAN RESOURCES  
SPECIALIST

SABRINA BARTON

HUMAN RESOURCES  
ASSISTANT (PART-TIME)

JANICE STACKS

# BEVILL STATE COMMUNITY COLLEGE



DIRECTOR OF ACCOUNTING  
& FINANCE

AMBERLEY CLARK

ACCOUNTANT

RHONDA PORTER

ACCOUNTS RECEIVABLE  
SPECIALIST

KRIS HOGLAND

ACCOUNTS PAYABLE  
PROCESSOR

CONNIE BASENBURG

4 CAMPUS CASHIERS/  
BUSINESS OFFICE MANAGERS

FAYETTE/HAMILTON/  
JASPER/SUMITON

UNRESTRICTED  
FUNDS ACCOUNTANT

JAMIE MCCOOL

RESTRICTED FUNDS  
ACCOUNTANT

SAMUEL COOPER

BUSINESS OFFICE  
SPECIALIST

BRANDY SMITH

# BEVILL STATE COMMUNITY COLLEGE



VICE - P R E S I D E N T

DR. RUSSELL HOWTON  
INSTRUCTIONAL AND STUDENT  
SERVICES

ADMINISTRATIVE  
ASSISTANT

TABATHA SMITH

DEAN OF STUDENTS

MELISSA STOWE

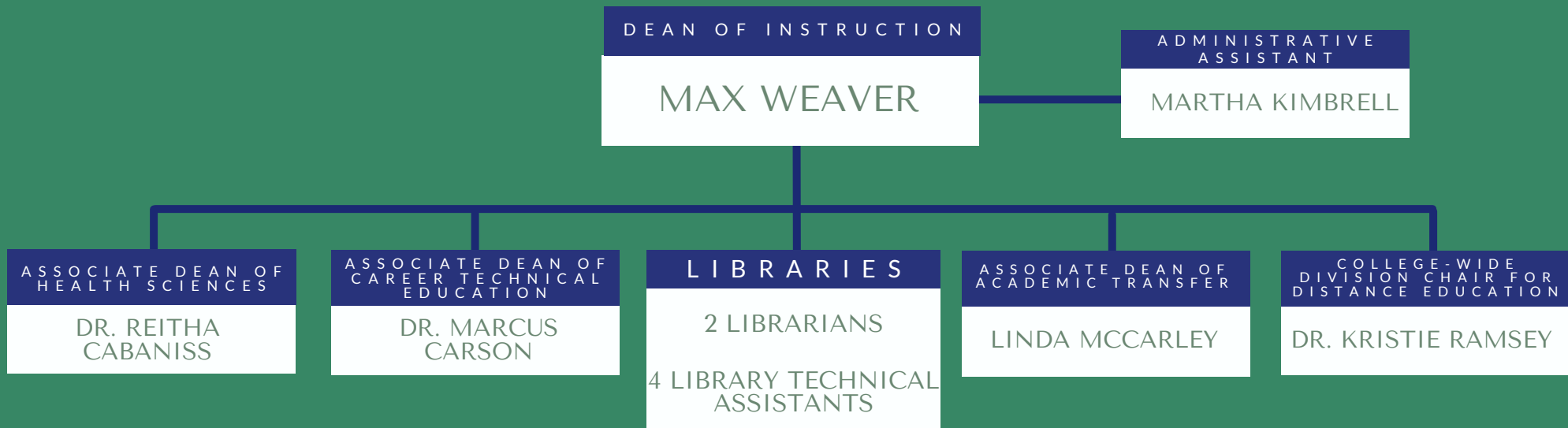
ASSOCIATE DEAN OF  
PLANNING, RESEARCH, &  
STUDENT SUCCESS

DOUG HARTLEY

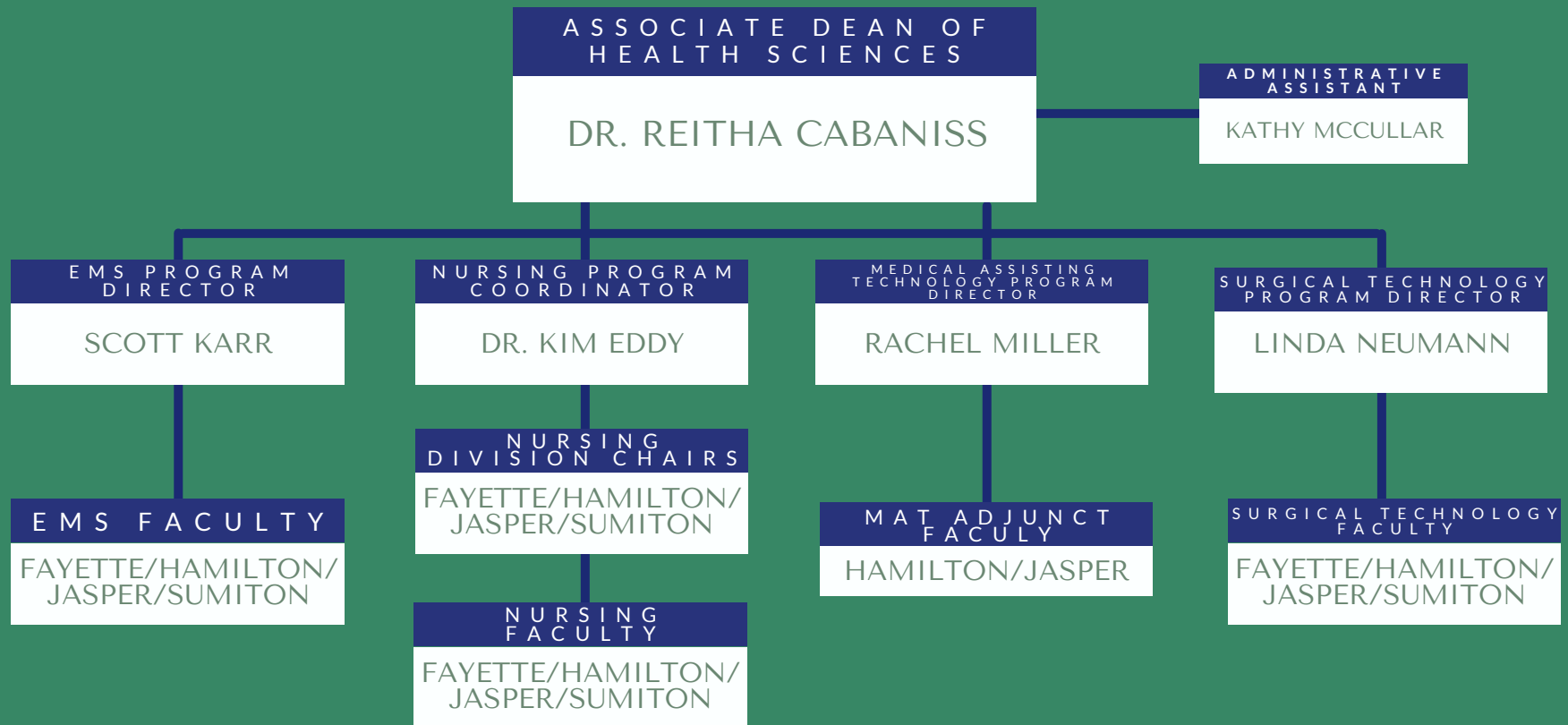
DEAN OF  
INSTRUCTION

MAX WEAVER

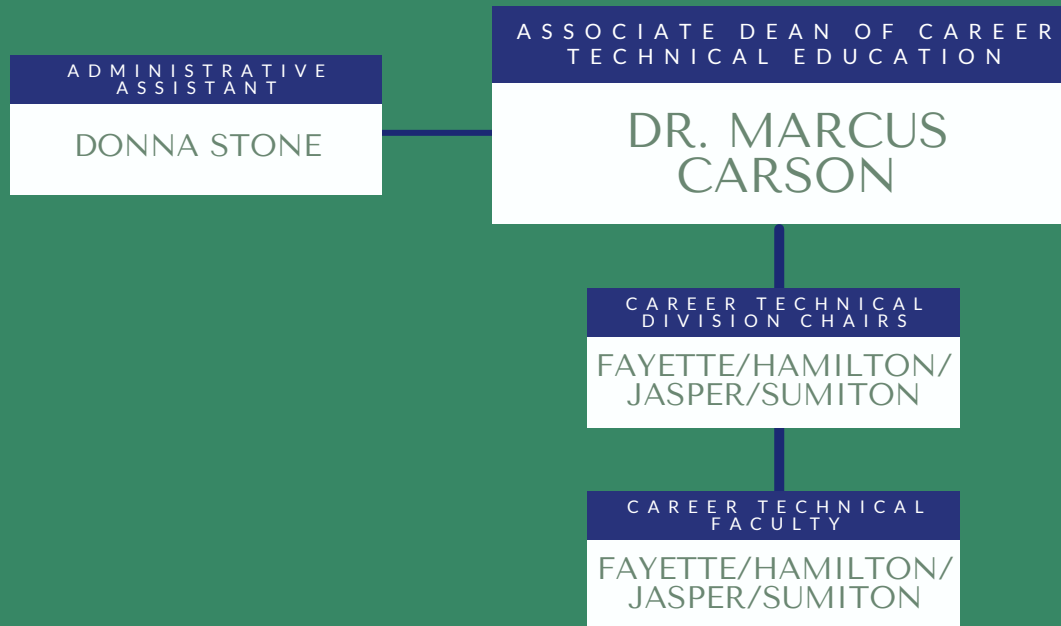
# BEVILL STATE COMMUNITY COLLEGE



# BEVILL STATE COMMUNITY COLLEGE



# BEVILL STATE COMMUNITY COLLEGE



---

ORGANIZATIONAL CHART OF

# BEVILL STATE COMMUNITY COLLEGE

---



ASSOCIATE DEAN OF  
ACADEMIC TRANSFER

LINDA MCCARLEY

ACADEMIC TRANSFER  
DIVISION CHAIRS

FAYETTE/HAMILTON/  
JASPER/SUMITON

ACADEMIC TRANSFER  
FACULTY

FAYETTE/HAMILTON/  
JASPER/SUMITON

# BEVILL STATE COMMUNITY COLLEGE



COLLEGE-WIDE DIVISION  
CHAIR FOR DISTANCE  
EDUCATION

DR. KRISTIE RAMSEY

TESTING  
COORDINATORS

FAYETTE/HAMILTON/  
JASPER/SUMITON

DISTANCE EDUCATION  
INSTRUCTIONAL DESIGN  
ASSISTANTS

DR. EMILY RASBERRY  
TANA HUMBERS

# BEVILL STATE COMMUNITY COLLEGE



DEAN OF STUDENTS

MELISSA STOWE

DIRECTOR OF FINANCIAL AID

GINA THOMASON

FINANCIAL AID

2 FINANCIAL AID OFFICERS

CENTRAL RECORDS OFFICER

ANDRIA STEVENS

ADMINISTRATIVE ASSISTANT

JENNIFER FRANKLIN

DIRECTOR OF ENROLLMENT MANAGEMENT

JILL PREUNINGER

DIRECTOR OF STUDENT SERVICES

SHERRY TERRY FAYETTE

FAYETTE

STUDENT SERVICES SPECIALISTS

TESTING COORDINATOR

DIRECTOR OF STUDENT SERVICES

BETH ROBERTS HAMILTON

HAMILTON

STUDENT SERVICES SPECIALISTS

TESTING COORDINATOR

DIRECTOR OF STUDENT SERVICES

JANA KENNEDY JASPER

JASPER

STUDENT SERVICES SPECIALISTS

TESTING COORDINATOR

DIRECTOR OF STUDENT SERVICES

JANA KENNEDY SUMITON

SUMITON

STUDENT SERVICES SPECIALISTS

TESTING COORDINATOR

DIRECTOR OF PICKENS CO. ED. CTR.

STEVEN KOON

# BEVILL STATE COMMUNITY COLLEGE



ASSOCIATE DEAN OF  
PLANNING, RESEARCH, &  
STUDENT SUCCESS  
**DOUG HARTLEY**

DATA MANAGER & FEDERAL  
PROGRAMS ASSISTANT  
**KATIE GALLAGHER**

DIRECTOR OF EDUCATION  
OPPORTUNITY  
**KEISHA LEWIS**

DIRECTORS OF  
EDUCATIONAL TALENT  
SEARCH  
**DEB JACKS**  
FAYETTE  
**KELLEY HARBISON**  
SUMITON

DIRECTORS OF STUDENT  
SUPPORT SERVICES  
**MISTY MORGAN**  
FAYETTE  
**GINA FRAZIER**  
HAMILTON  
**JEREMY HARKNESS**  
JASPER  
**CRYSTAL HICKS**  
SUMITON

DIRECTORS OF  
UPWARD BOUND  
**JULIE MOORE**  
FAYETTE  
**RONDA TIDWELL**  
HAMILTON  
**KAYLA LINDSAY**  
SUMITON

DIRECTOR OF UPWARD  
BOUND MATH & SCIENCE  
**ANNE UHLMAN**

EDUCATION  
OPPORTUNITY  
EOC SPECIALISTS

TALENT SEARCH  
T.S. ADVISORS / RECORD  
MANAGERS / ADMINISTRATI  
VE ASSISTANT

STUDENT SUPPORT  
SERVICES  
SSS ACADEMIC  
ADVISORS/RECORDS  
COORDINATORS

UPWARD BOUND  
UB PROJECT  
COORDS./RECORDS  
MGRS

UBMS  
ACADEMIC  
COORDINATOR

UBMS  
RECORDS  
MANAGER

---

ORGANIZATIONAL CHART OF

# BEVILL STATE COMMUNITY COLLEGE

---



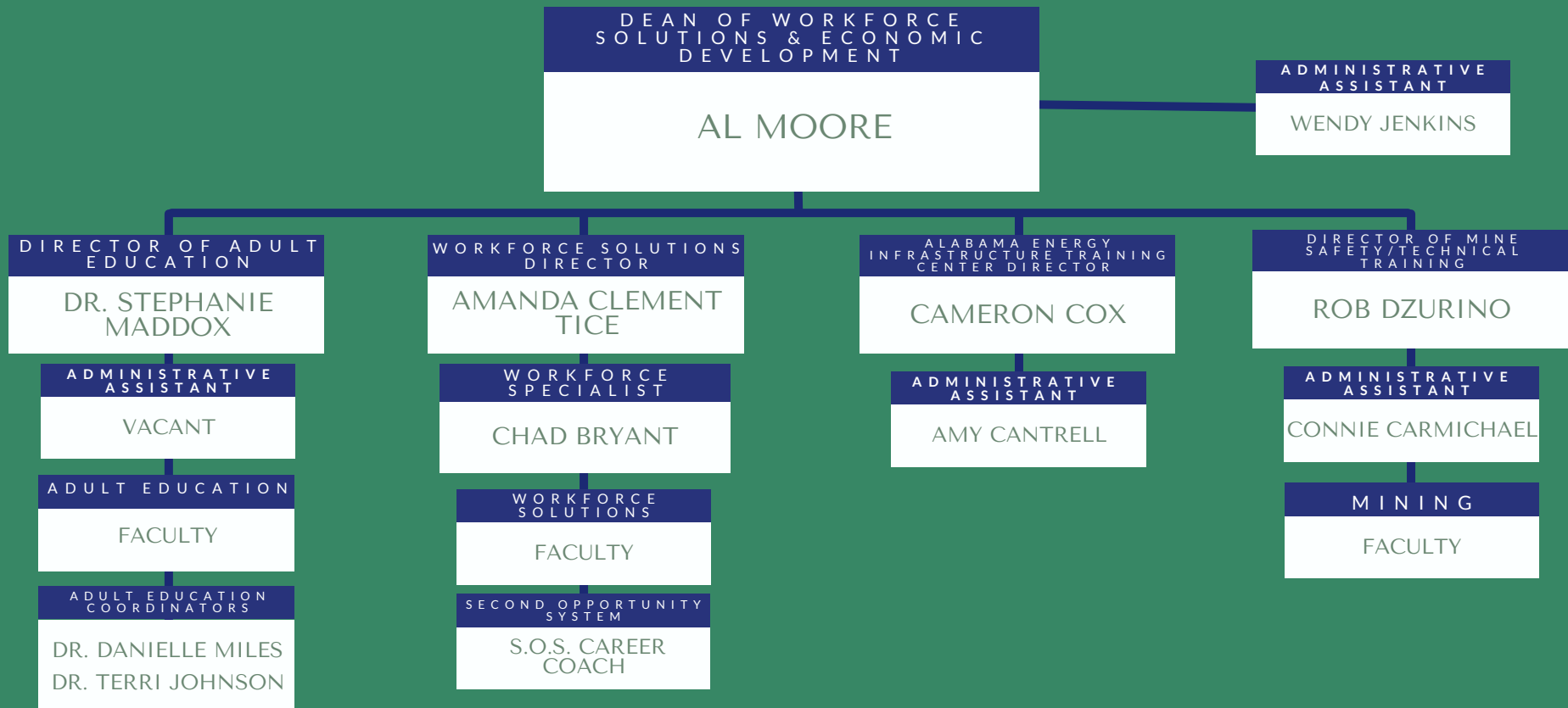
VICE PRESIDENT OF  
WORKFORCE & STRATEGIC  
INITIATIVES

SHAWN MORGAN

DEAN OF WORKFORCE  
SOLUTIONS & ECONOMIC  
DEVELOPMENT

AL MOORE

# BEVILL STATE COMMUNITY COLLEGE



ORGANIZATIONAL CHART OF

# BEVILL STATE COMMUNITY COLLEGE



DIRECTOR OF PUBLIC  
RELATIONS, RECRUITING, &  
ADVANCEMENT

TANA COLLINS-ALLRED

RECRUITERS

SARAH ALLRED  
EAST

COLE RICHARDS  
WEST

MULTI-MEDIA  
COORDINATOR

TIFFANY HIGGINS

# BEVILL STATE COMMUNITY COLLEGE



ATHLETIC DIRECTOR  
/SOFTBALL COACH  
**CHRIS HARRIS**

